

Valve Boxes

RECESSED

KRVB



SURFACE MOUNTED

KSMB



KRVB & KSMB

Valve Boxes can have louvers, peepholes or glass panels. Boxes can be drilled or punched for pipes or conduits of all sizes.

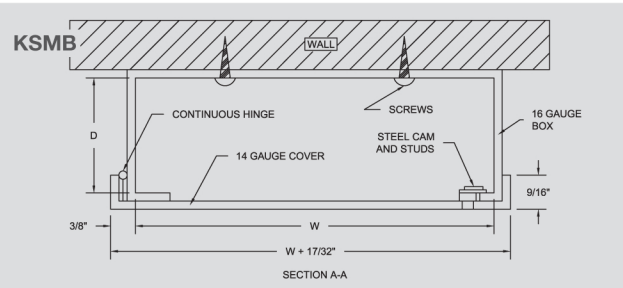
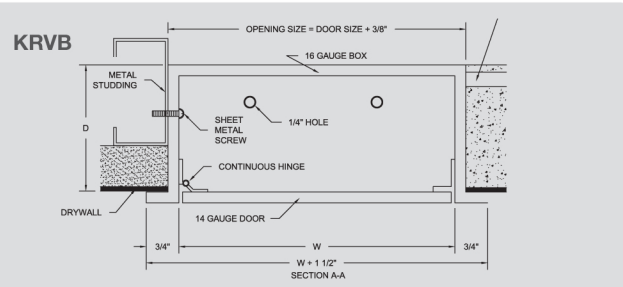
MATERIAL Box: 16 ga. steel / Door: 14 ga. steel

HINGE TYPE Continuous piano hinge;
KVRB: Concealed; KSMB: Exposed

LATCH TYPE Flush to finished surface; Screwdriver operated with stainless steel cam and studs or cylinder lock with automatic dust shutter

FINISH Prime coat of rust inhibitive electrostatic powder, painted white

NOTES KRVB Trim: 3/4" arc-welded and ground smooth;
1/4" holes provided for anchoring to wall;
Only manufactured to custom specs



DID YOU KNOW?

Karp Access Doors provide vital access with security, safety and aesthetic appeal. Around the world, Karp doors are the brand of choice for architects, designers, and builders.